

# Wireless Meter Gateway Solution **NEW**

Compatible with Chint DTSU666 Meters

## Flexible AP / STA Networking

One-to-many master / slave architecture for easy system expansion.

## Easy Installation & Meter Compatibility

Wide input 85–277 Vac, DIN-rail mounting, fast commissioning, compatible with Chint meters.

## Stable Dual Communication

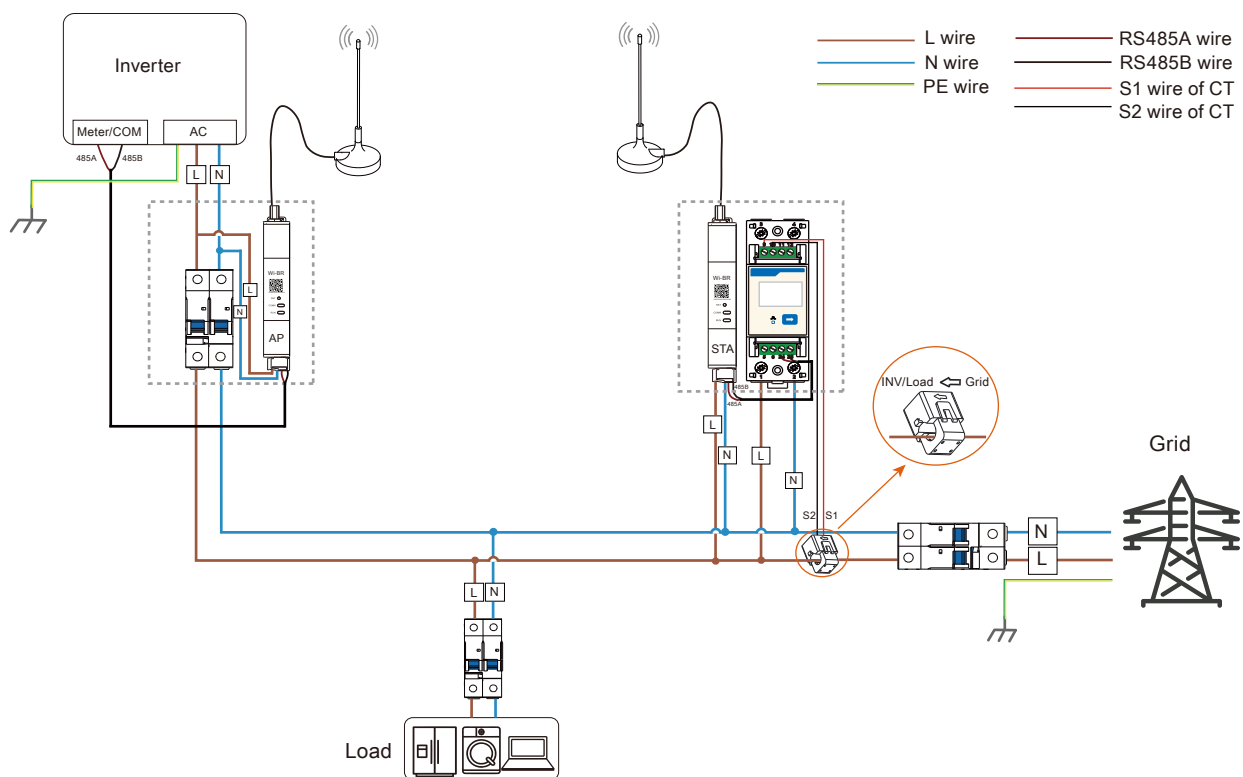
RS-485 + 802.11ah (868 MHz) with encrypted wireless transmission up to 200 m.

## Low Power & Smart Operation

$\leq 2$  W power consumption with LED status, remote upgrade and diagnostics.



PRODUCT NAME	SMG666-1PF1-L1
<b>General Parameters</b>	
Working Mode	AP (master device) / STA (slave device)
Communication Method	RS-485 / Wireless Communication
Network Protocol	IEEE 802.11 Ah
Operating Voltage	85 Vac ~ 277 Vac
Maximum Power	2 W
Operating Temperature	-25°C ~ +55°C
Wireless Frequency	868 MHz
Wireless Transmission Distance	≤ 200 m
Way To Install	DIN35 mm Rail Mounting



\*Wi-BR can work with both single-phase and three-phase meters. Here uses the connection to single-phase meter and European TN-S for example.

\*Wi-BR is not waterproof. During installation, take proper waterproof measures, or place it in the power distribution cabinet or other waterproof box.

### Wireless Meter Gateway (Wi-BR) Single-Phase Wiring Diagram